

# EXPO

2012

Engineering Career Fair



Tuesday, Wednesday February 7-8, 2012

Stewart Center

Purdue Memorial Union



[www.purdueesc.org](http://www.purdueesc.org)

# Introduction to EXPO

Seminars: Tuesday, February 7, 2012  
10:30 am - 5:20 pm  
Stewart Center

Career Fair: Wednesday, February 8, 2012  
9:00 am - 4:00 pm  
Purdue Memorial Union

EXPO is PESC's spring career fair with over 135 companies attending each year. Companies will be looking for full time employees, interns and co-op students in engineering, technology, science and management.

## **Job Fair Preparation: EXPO Prep Night**

Learn more about what companies are looking for!

Free food provided!

Thursday, February 2, 2012 6:00 pm: PHYS 112

## **Company Seminars**

Learn about companies in small seminar style presentations

See pages 7-8 for the seminar schedule

Tuesday, February 7, 2012 10:30 am - 5:20 pm: Stewart Center

## **Preparation**

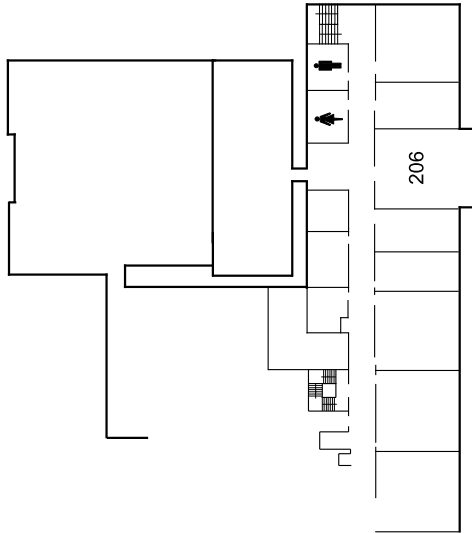
- Review the list of companies and select several that match your interests. Read the company profiles and go online to obtain more background information about the companies in which you are interested. Visit our website at <https://careerfair.purdueesc.org/> for interactive searching and career fair layouts.
- Come up with a few questions to ask the company representatives when you speak with them.
- Apply early for positions with your preferred company online at CCO Express ([www.cco.purdue.edu](http://www.cco.purdue.edu)). Many companies schedule students for interviews before the day of the fair through the CCO.
- Apply online for positions at the company's website. Recruiters like to see students who apply early.

## **The Day of the Fair**

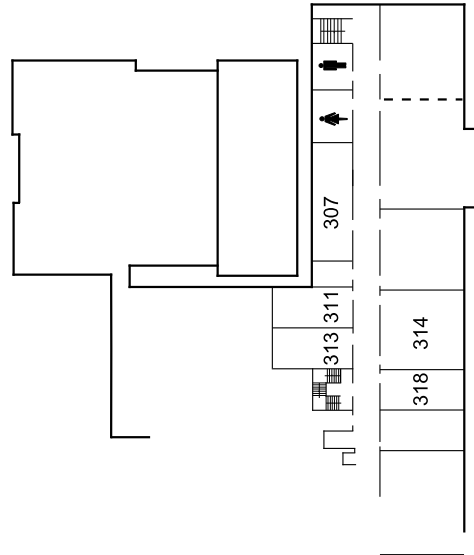
- Companies looking for Co-Op students are mainly located in the lounges and room 118
- Carry several copies of your resume in a nice portfolio. If you do not have a portfolio, bring a clean folder.
- Bring a list of companies you plan on speaking to. Be sure to write down the locations of their booths and notes about what the companies do.
- Dress in business casual for the fair to stay comfortable. Leave your business formal wear for the interviews.

# Stewart Center Layout

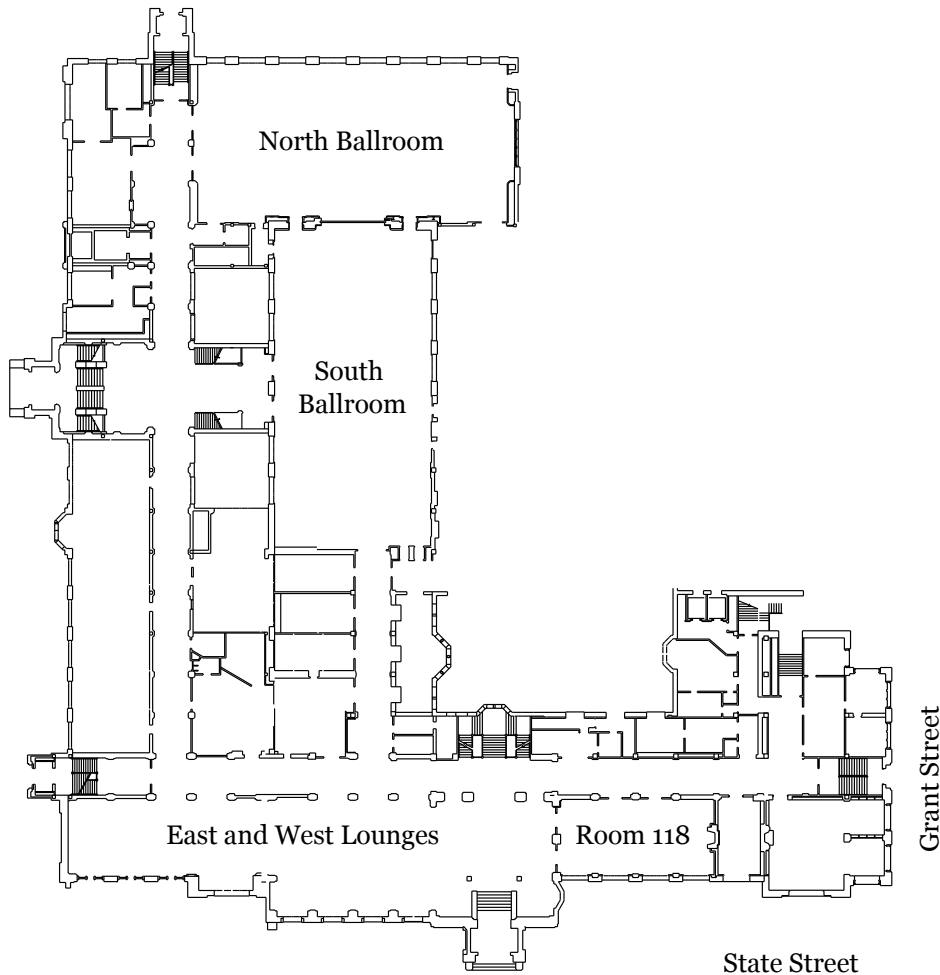
## Second Floor



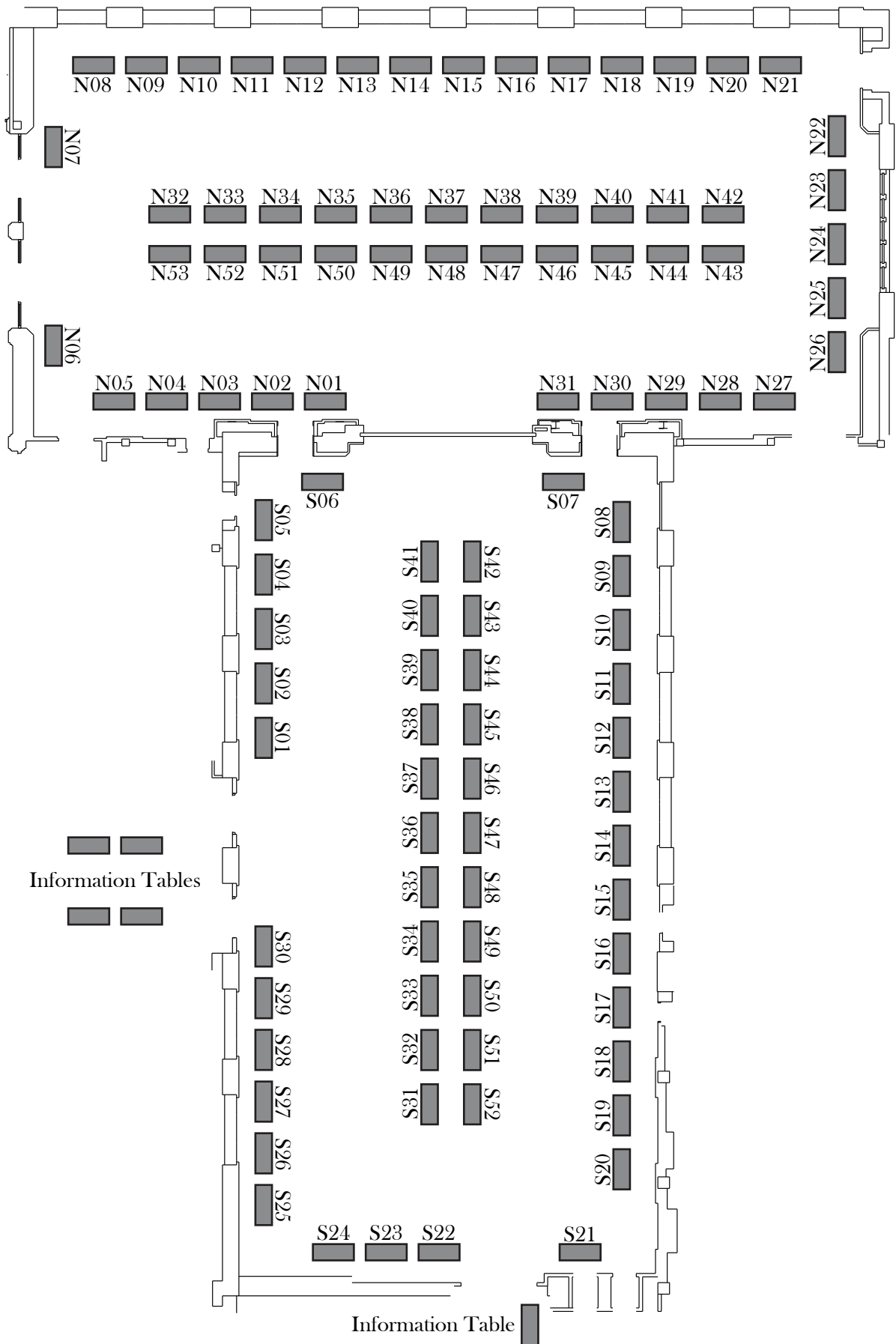
## Third Floor



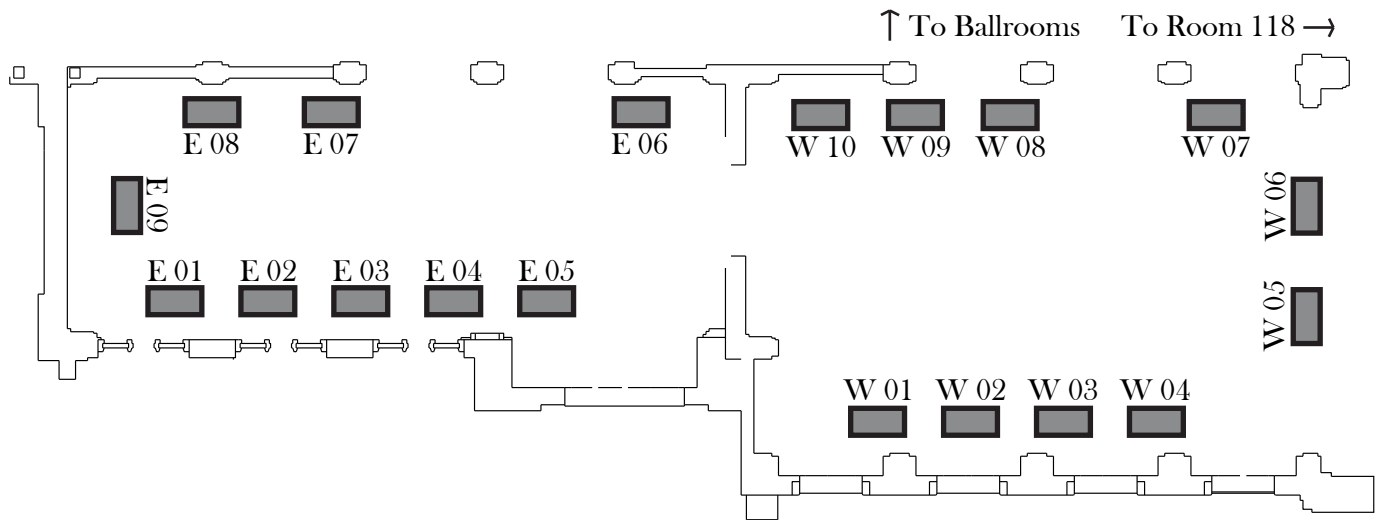
# Purdue Memorial Union Layout



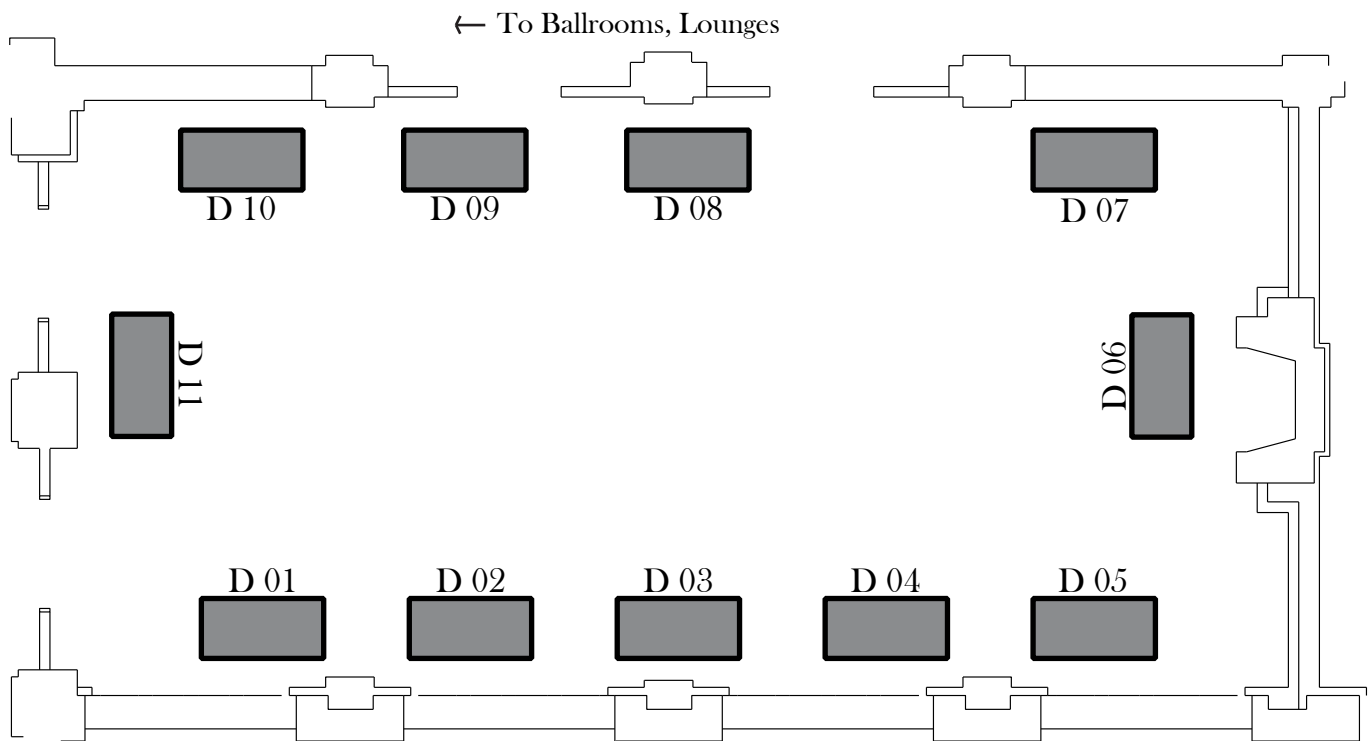
# North and South Ballroom Layout



# East and West Lounges Layout



# Room 118 Layout



# List of Participating Companies

ABF Freight System, Inc.	N08	HUSCO International, Inc.	W03
Accenture	S31	IBM	S30
Advanced Micro Devices	N07	Ingersoll Rand/Trane	D02
Agr International, Inc	E03	Intel Corporation	N31
Air Liquide	S42	Jacobs	N19
Albemarle	E08	JDSU	N44
Altair Engineering	D10	John Deere	E06
Amazon	D11	Johnson Controls	S35
Ameren	W02	Keyence Corporation of America	S51
American Woodmark Corporation	S14	Kiewit Corporation	D04
Angie's List	N17	Kohler Co.	S46
Apple	W07	L-3 Communications, Mission Integration Division	E02
Applied Materials	N09	L-3 Communications-Communication systems -West	S50
Applied Research Laboratories	N05	Lexmark International	E09
ArcelorMittal	N04	Lockheed Martin	N43
Arizona Public Service	S38	Lowe's Companies, Inc.	S47
B&R Industrial Automation	S19	Lutron Electronics	W05
Baker Hughes	N10	MacLean-Fogg Company	N48
Ball Aerospace and Technologies Corp.	N47	Marathon Petroleum Company LP	W08
Barry-Wehmiller Design Group	D03	Mercedes Benz US International, Inc	S26
Bastian Solutions	N03	Michelin North America	N49
Bechtel Corporation	S40	Micron Technology, Inc.	N50
Bechtel Plant Machinery, Inc.	N22	Microsoft	S41
Belcan Advanced Engineering and Technology	N25	Miniature Precision Components	S05
Belden	S10	MIT Lincoln Laboratory	S09
Bloomberg	S16	Molex, Inc	S43
BMW Manufacturing Co.	E05	Muller-BBM VibroAkustik Systeme, Inc.	N13
Boston Scientific	N30	National Security Agency	W10
BP Americas Inc.	S29	NAVAIR	N15
Bury+Partners, Inc.	N33	Navistar, Inc.	S11
C&I Engineering	N11	Niagara Bottling, LLC	S15
Cambric	S32	Northrop Grumman Corporation	S01
Cameron	N18	NVIDIA	S06
Caterpillar Inc	S07	Oerlikon Fairfield Manufacturing	S18
Cerner Corporation	N53	Orbital Sciences Corporation	N23
Charles River Development	N12	Otis Elevator Company	N14
Chrysler Group LLC	N01	Parkson Corporation	S04
Cisco	E07	Peregrine Semiconductor	S21
CN Railroad	S28	PowerPlan	S45
CNH America LLC	W01	Praxair, Inc.	S44
Cognizant Technology Solutions	N34	Productive Resources	N52
ConAgra Foods, Inc.	S34	Remy International	N29
Contact Singapore	S48	Ritron	N28
Contech Construction Products	S39	Robert Bosch LLC	N27
Danaher Corporation	S17	Rockwell Automation	S22
Delphi	W04	Ryder	N38
Dwyer Instruments, Inc.	S08	SanDisk	N37
Eaton Corporation	E01	Sargent & Lundy	N16
EchoStar	S12	Schlumberger	N32
EISENMANN Corporation	N24	Schweitzer Engineering Laboratories, Inc.	N42
Emerson Process Management	D05	Seatrax, Inc.	N41
Enova Financial	N20	Siemens Corporation	N21
Esterline/Control Systems - BVR	N35	Southwest Research Institute	S23
Evonik Degussa Corporation	W09	SPX Corporation	N51
Exegy Inc	E04	Syngenta	N40
Fenwal	D09	Tata Consultancy Services	S24
Garmin International	S52	Tesla Motors	D07
General Dynamics Electric Boat	N26	The Clorox Company	S36
Gentex Corporation	D06	The Kenrich Group	S25
Greeley and Hansen	N36	ThyssenKrupp Presta	S02
Halliburton	S20	Tognum America Inc.	S27
Harris Corporation	D08	US Marine Corp. Officer Programs	N45
Harrison Steel Castings Company	N39	US Navy Officer Programs	W06
Hill-Rom Holdings Inc.	D01	Valdes Engineering Company	S03
Hill's Pet Nutrition	N46	Valeo Sylvania	S33
Honeywell	N06	Wight & Company	N02
Hughes Network Systems	S13	Wilson Sporting Goods	S37
		Zimmer, Inc.	S49

# **Seminar Schedule**

---

## **10:30 am - 11:20 am**

Mercedes Benz: STEW 206

Bastian Solutions: STEW 307

Bechtel Corp: STEW 314

---

## **11:30 am - 12:20 pm**

Honeywell: STEW 206

US Navy Officer Programs: STEW 314

---

## **12:30 pm - 1:20 pm**

Chrystler LLC: STEW 206

Cameron: STEW 307

Eisenmann Corp: STEW 311

ConAgra: STEW 314

---

## **1:30 pm - 2:20 pm**

Danaher Corp: STEW 206

L-3 Communications: STEW 307

Kiewit Corp: STEW 311

Niagara Bottling: STEW 313

Bloomberg: STEW 314

# **Seminar Schedule**

## **2:30 pm - 3:20 pm**

---

Tesla Motors: STEW 206

Lutron Electronics: STEW 307

Arizona Public Service: STEW 311

American Woodmark: STEW 313

Accenture: STEW 314

## **3:30 pm - 4:20 pm**

---

Michelin: STEW 206

MacLean-Fogg: STEW 307

Greeley & Hansen: STEW 311

Lowes: STEW 313

Baker Hughes: STEW 314

Schweitzer Corp: STEW 318

## **4:30 pm - 5:20 pm**

---

Ball Aerospace: STEW 206

PowerPlan: STEW 307

Micron Technology: STEW 311

Ryder: STEW 313

Parkson Corporation: STEW 318

# Aeronautical & Astronautical Engineering

Employer	Table	Freshman	Sophomore	Junior	Senior	Graduate	Co-op	Internship	Full time	US Citizen	Permanent resident	F1 Visa	J1 Visa
Accenture	S31												
Altair Engineering	D10												
Ball Aerospace and Technologies Corp.	N47												
Belcan Advanced Engineering and Technology	N25												
Bloomberg	S16												
Chrysler Group LLC	N01												
Contact Singapore	S48												
General Dynamics Electric Boat	N26												
Halliburton	S20												
Harris Corporation	D08												
Honeywell	N06												
Jacobs	N19												
Keyence Corporation of America	S51												
L-3 Communications, Mission Integration Division	E02												
Lockheed Martin	N43												
MIT Lincoln Laboratory	S09												
Muller-BBM VibroAkustik Systeme, Inc.	N13												
Orbital Sciences Corporation	N23												
Schlumberger	N32												
SPX Corporation	N51												
Tesla Motors	D07												
US Marine Corp. Officer Programs	N45												
US Navy Officer Programs	W06												
Zimmer, Inc.	S49												

# Agricultural & Biological Engineering

Employer	Table	Freshman	Sophomore	Junior	Senior	Graduate	Co-op	Internship	Full time	US Citizen	Permanent resident	F1 Visa	J1 Visa
Air Liquide	S42												
CNH America LLC	W01												
Contact Singapore	S48												
Halliburton	S20												
Keyence Corporation of America	S51												
Productive Resources	N52												
Syngenta	N40												
US Marine Corp. Officer Programs	N45												
US Navy Officer Programs	W06												
Zimmer, Inc.	S49												

## Aviation Technology

Employer	Table	Freshman	Sophomore	Junior	Senior	Graduate	Co-op	Internship	Full time	US Citizen	Permanent resident	F1 Visa	J1 Visa
L-3 Communications, Mission Integration Division	E02												
US Marine Corp. Officer Programs	N45												

## Biochemistry

Employer	Table	Freshman	Sophomore	Junior	Senior	Graduate	Co-op	Internship	Full time	US Citizen	Permanent resident	F1 Visa	J1 Visa
Air Liquide	S42												
Cerner Corporation	N53												
Contact Singapore	S48												
US Marine Corp. Officer Programs	N45												
Zimmer, Inc.	S49												

## Biological Sciences

Employer	Table	Freshman	Sophomore	Junior	Senior	Graduate	Co-op	Internship	Full time	US Citizen	Permanent resident	F1 Visa	J1 Visa
Cerner Corporation	N53												
Contact Singapore	S48												
US Marine Corp. Officer Programs	N45												
Zimmer, Inc.	S49												

# Biomedical Engineering

Employer	Table	Freshman	Sophomore	Junior	Senior	Graduate	Co-op	Internship	Full time	US Citizen	Permanent resident	F1 Visa	J1 Visa
Accenture	S31												
Altair Engineering	D10												
BIOTRONIK / Micro System Engineering, Inc.	E03												
Boston Scientific	N30												
Cerner Corporation	N53												
Contact Singapore	S48												
Fenwal	D09												
Halliburton	S20												
Hill-Rom Holdings Inc.	D01												
Keyence Corporation of America	S51												
PowerPlan	S45												
Praxair, Inc.	S44												
US Marine Corp. Officer Programs	N45												
US Navy Officer Programs	W06												
Zimmer, Inc.	S49												

# Civil Engineering

Employer	Table	Freshman	Sophomore	Junior	Senior	Graduate	Co-op	Internship	Full time	US Citizen	Permanent resident	F1 Visa	J1 Visa
Accenture	S31												
Air Liquide	S42												
Ameren	W02												
Applied Materials	N09												
Arizona Public Service	S38												
Bechtel Corporation	S40												
BMW Manufacturing Co.	E05												
Bury+Partners, Inc.	N33												
Cameron	N18												
Caterpillar Inc	S07												
Cerner Corporation	N53												
C&I Engineering	N11												
Contact Singapore	S48												
Contech Construction Products	S39												
General Dynamics Electric Boat	N26												
Greeley and Hansen	N36												
Halliburton	S20												
Jacobs	N19												
Keyence Corporation of America	S51												
Kiewit Corporation	D04												
L-3 Communications, Mission Integration Division	E02												
Parkson Corporation	S04												
Sargent & Lundy	N16												
Schlumberger	N32												
The Kenrich Group	S25												
US Marine Corp. Officer Programs	N45												
US Navy Officer Programs	W06												

# Computer Science

Employer	Table	Freshman	Sophomore	Junior	Senior	Graduate	Co-op	Internship	Full time	US Citizen	Permanent resident	F1 Visa	J1 Visa
Accenture	S31												
Advanced Micro Devices	N07												
Altair Engineering	D10												
Amazon	D11												
American Woodmark Corporation	S14												
Angie's List	N17												
Apple	W07												
Applied Research Laboratories	N05												
ArcelorMittal	N04												
Baker Hughes	N10												
Ball Aerospace and Technologies Corp.	N47												
Bastian Solutions	N03												
Bechtel Plant Machinery, Inc.	N22												
Belcan Advanced Engineering and Technology	N25												
BIOTRONIK / Micro System Engineering, Inc.	E03												
Bloomberg	S16												
BMW Manufacturing Co.	E05												
B&R Industrial Automation	S19												
Caterpillar Inc	S07												
Cerner Corporation	N53												
Charles River Development	N12												
Cisco	E07												
Cognizant Technology Solutions	N34												
Contact Singapore	S48												
Delphi	W04												
Eaton Corporation	E01												
EchoStar	S12												
Emerson Process Management	D05												
Enova Financial	N20												
Esterline/Control Systems - BVR	N35												
Exegy Inc	E04												
Fenwal	D09												
Garmin International	S52												
General Dynamics Electric Boat	N26												
Harris Corporation	D08												
Hughes Network Systems	S13												
Intel Corporation	N31												
Jacobs	N19												
JDSU	N44												
Johnson Controls	S35												

# Computer Science

Employer	Table	Freshman	Sophomore	Junior	Senior	Graduate	Co-op	Internship	Full time	US Citizen	Permanent resident	F1 Visa	J1 Visa
l-3 Communications-Communication systems -West	S50												
L-3 Communications, Mission Integration Division	E02												
Lexmark International	E09												
Lockheed Martin	N43												
Lutron Electronics	W05												
Micron Technology, Inc.	N50												
MIT Lincoln Laboratory	S09												
Molex, Inc	S43												
National Security Agency	W10												
NAVAIR	N15												
Northrop Grumman Corporation	S01												
NVIDIA	S06												
Peregrine Semiconductor	S21												
PowerPlan	S45												
Remy International	N29												
Rockwell Automation	S22												
SanDisk	N37												
Schlumberger	N32												
Schweitzer Engineering Laboratories, Inc.	N42												
Siemens Corporation	N21												
Southwest Research Institute	S23												
SPX Corporation	N51												
Tata Consultancy Services	S24												
Tesla Motors	D07												
US Marine Corp. Officer Programs	N45												
US Navy Officer Programs	W06												

# Construction Engineering Management

Employer	Table	Freshman	Sophomore	Junior	Senior	Graduate	Co-op	Internship	Full time	US Citizen	Permanent resident	F1 Visa	J1 Visa
American Woodmark Corporation	S14												
Caterpillar Inc	S07												
Contact Singapore	S48												
Contech Construction Products	S39												
Halliburton	S20												
Intel Corporation	N31												
Johnson Controls	S35												
Kiewit Corporation	D04												
Lutron Electronics	W05												
Marathon Petroleum Company LP	W08												
The Kenrich Group	S25												
US Marine Corp. Officer Programs	N45												
US Navy Officer Programs	W06												

# Computer Graphics Technology

Employer	Table	Freshman	Sophomore	Junior	Senior	Graduate	Co-op	Internship	Full time	US Citizen	Permanent resident	F1 Visa	J1 Visa
Cerner Corporation	N53												
Contact Singapore	S48												
US Marine Corp. Officer Programs	N45												

# Chemical Engineering

Employer	Table	Freshman	Sophomore	Junior	Senior	Graduate	Co-op	Internship	Full time	US Citizen	Permanent resident	F1 Visa	J1 Visa
Accenture	S31												
Air Liquide	S42												
Albemarle	E08												
American Woodmark Corporation	S14												
Applied Materials	N09												
Arizona Public Service	S38												
Baker Hughes	N10												
Ball Aerospace and Technologies Corp.	N47												
Barry-Wehmiller Design Group	D03												
Bechtel Corporation	S40												
Bloomberg	S16												
Boston Scientific	N30												
BP Americas Inc.	S29												
Cerner Corporation	N53												
C&I Engineering	N11												
ConAgra Foods, Inc.	S34												
Contact Singapore	S48												
Dwyer Instruments, Inc.	S08												
EISENMANN Corporation	N24												
Evonik Degussa Corporation	W09												
General Dynamics Electric Boat	N26												
Gentex Corporation	D06												
Halliburton	S20												
Intel Corporation	N31												
Jacobs	N19												
Johnson Controls	S35												
Keyence Corporation of America	S51												
Marathon Petroleum Company LP	W08												
Michelin North America	N49												
Micron Technology, Inc.	N50												
NAVAIR	N15												
Niagara Bottling, LLC	S15												
Parkson Corporation	S04												
PowerPlan	S45												
Praxair, Inc.	S44												
Schlumberger	N32												
Syngenta	N40												
Tesla Motors	D07												
US Marine Corp. Officer Programs	N45												
US Navy Officer Programs	W06												
Valeo Sylvania	S33												

# Chemistry

Employer	Table	Freshman	Sophomore	Junior	Senior	Graduate	Co-op	Internship	Full time	US Citizen	Permanent resident	F1 Visa	J1 Visa
Albemarle	E08												
Applied Materials	N09												
Arizona Public Service	S38												
Baker Hughes	N10												
Bloomberg	S16												
Cerner Corporation	N53												
Contact Singapore	S48												
Evonik Degussa Corporation	W09												
Intel Corporation	N31												
Keyence Corporation of America	S51												
NAVAIR	N15												
Praxair, Inc.	S44												
Schlumberger	N32												
Tesla Motors	D07												
US Marine Corp. Officer Programs	N45												
US Navy Officer Programs	W06												

# Computer Engineering

Employer	Table	Freshman	Sophomore	Junior	Senior	Graduate	Co-op	Internship	Full time	US Citizen	Permanent resident	F1 Visa	J1 Visa
Accenture	S31												
Advanced Micro Devices	N07												
Air Liquide	S42												
Altair Engineering	D10												
Amazon	D11												
Angie's List	N17												
Apple	W07												
Applied Materials	N09												
Applied Research Laboratories	N05												
ArcelorMittal	N04												
Arizona Public Service	S38												
Baker Hughes	N10												
Ball Aerospace and Technologies Corp.	N47												
Bastian Solutions	N03												
Bechtel Corporation	S40												
Belcan Advanced Engineering and Technology	N25												
BIOTRONIK / Micro System Engineering, Inc.	E03												
Bloomberg	S16												
BMW Manufacturing Co.	E05												
Boston Scientific	N30												
B&R Industrial Automation	S19												
Caterpillar Inc	S07												
Cerner Corporation	N53												
Charles River Development	N12												
Chrysler Group LLC	N01												
Cisco	E07												
Cognizant Technology Solutions	N34												
Contact Singapore	S48												
Danaher Corporation	S17												
Delphi	W04												
Eaton Corporation	E01												
EchoStar	S12												
Emerson Process Management	D05												
Enova Financial	N20												
Fenwal	D09												
Garmin International	S52												
General Dynamics Electric Boat	N26												
Gentex Corporation	D06												
Harris Corporation	D08												
Hill-Rom Holdings Inc.	D01												

# Computer Engineering

Employer	Table	Freshman	Sophomore	Junior	Senior	Graduate	Co-op	Internship	Full time	US Citizen	Permanent resident	F1 Visa	J1 Visa
Hughes Network Systems	S13												
Intel Corporation	N31												
JDSU	N44												
Johnson Controls	S35												
Keyence Corporation of America	S51												
Kohler Co.	S46												
l-3 Communications-Communication systems -West	S50												
L-3 Communications, Mission Integration Division	E02												
Lexmark International	E09												
Lockheed Martin	N43												
Lutron Electronics	W05												
Micron Technology, Inc.	N50												
MIT Lincoln Laboratory	S09												
Molex, Inc	S43												
National Security Agency	W10												
NAVAIR	N15												
Northrop Grumman Corporation	S01												
Orbital Sciences Corporation	N23												
PowerPlan	S45												
Rockwell Automation	S22												
SanDisk	N37												
Schlumberger	N32												
Schweitzer Engineering Laboratories, Inc.	N42												
Southwest Research Institute	S23												
Tata Consultancy Services	S24												
Tesla Motors	D07												
US Marine Corp. Officer Programs	N45												
US Navy Officer Programs	W06												

# Electrical Engineering

Employer	Table	Freshman	Sophomore	Junior	Senior	Graduate	Co-op	Internship	Full time	US Citizen	Permanent resident	F1 Visa	J1 Visa
Accenture	S31												
Advanced Micro Devices	N07												
Air Liquide	S42												
Albemarle	E08												
Altair Engineering	D10												
Ameren	W02												
American Woodmark Corporation	S14												
Angie's List	N17												
Apple	W07												
Applied Materials	N09												
Applied Research Laboratories	N05												
ArcelorMittal	N04												
Arizona Public Service	S38												
Baker Hughes	N10												
Ball Aerospace and Technologies Corp.	N47												
Barry-Wehmiller Design Group	D03												
Bastian Solutions	N03												
Bechtel Corporation	S40												
Bechtel Plant Machinery, Inc.	N22												
Belcan Advanced Engineering and Technology	N25												
Belden	S10												
BIOTRONIK / Micro System Engineering, Inc.	E03												
Bloomberg	S16												
BMW Manufacturing Co.	E05												
Boston Scientific	N30												
B&R Industrial Automation	S19												
Bury+Partners, Inc.	N33												
Cameron	N18												
Caterpillar Inc	S07												
Cerner Corporation	N53												
Charles River Development	N12												
Chrysler Group LLC	N01												
C&I Engineering	N11												
Cisco	E07												
CNH America LLC	W01												
Cognizant Technology Solutions	N34												
ConAgra Foods, Inc.	S34												
Contact Singapore	S48												
Danaher Corporation	S17												
Delphi	W04												

# Electrical Engineering

Employer	Table	Freshman	Sophomore	Junior	Senior	Graduate	Co-op	Internship	Full time	US Citizen	Permanent resident	F1 Visa	J1 Visa
Dwyer Instruments, Inc.	S08												
Eaton Corporation	E01												
EchoStar	S12												
EISENMANN Corporation	N24												
Emerson Process Management	D05												
Esterline/Control Systems - BVR	N35												
Fenwal	D09												
Garmin International	S52												
General Dynamics Electric Boat	N26												
Gentex Corporation	D06												
Halliburton	S20												
Harris Corporation	D08												
Hill-Rom Holdings Inc.	D01												
Hughes Network Systems	S13												
HUSCO International, Inc.	W03												
Ingersoll Rand/Trane	D02												
Intel Corporation	N31												
Jacobs	N19												
JDSU	N44												
Johnson Controls	S35												
Keyence Corporation of America	S51												
Kiewit Corporation	D04												
Kohler Co.	S46												
l-3 Communications-Communication systems -West	S50												
L-3 Communications, Mission Integration Division	E02												
Lexmark International	E09												
Lockheed Martin	N43												
Lutron Electronics	W05												
Marathon Petroleum Company LP	W08												
Mercedes Benz US International, Inc	S26												
Michelin North America	N49												
Micron Technology, Inc.	N50												
MIT Lincoln Laboratory	S09												
Molex, Inc	S43												
National Security Agency	W10												
NAVAIR	N15												
Navistar, Inc.	S11												
Niagara Bottling, LLC	S15												
Northrop Grumman Corporation	S01												
NVIDIA	S06												

# Electrical Engineering

Employer	Table	Freshman	Sophomore	Junior	Senior	Graduate	Co-op	Internship	Full time	US Citizen	Permanent resident	F1 Visa	J1 Visa
Oerlikon Fairfield Manufacturing	S18												
Orbital Sciences Corporation	N23												
Otis Elevator Company	N14												
Peregrine Semiconductor	S21												
Productive Resources	N52												
Remy International	N29												
Robert Bosch LLC	N27												
Rockwell Automation	S22												
SanDisk	N37												
Sargent & Lundy	N16												
Schlumberger	N32												
Schweitzer Engineering Laboratories, Inc.	N42												
Seatrx, Inc.	N41												
Siemens Corporation	N21												
Southwest Research Institute	S23												
SPX Corporation	N51												
Tata Consultancy Services	S24												
Tesla Motors	D07												
Tognum America Inc.	S27												
US Marine Corp. Officer Programs	N45												
US Navy Officer Programs	W06												
Valeo Sylvania	S33												

# Industrial Engineering

Employer	Table	Freshman	Sophomore	Junior	Senior	Graduate	Co-op	Internship	Full time	US Citizen	Permanent resident	F1 Visa	J1 Visa
ABF Freight System, Inc.	N08												
Accenture	S31												
Air Liquide	S42												
American Woodmark Corporation	S14												
Ball Aerospace and Technologies Corp.	N47												
Bastian Solutions	N03												
Bechtel Corporation	S40												
BIOTRONIK / Micro System Engineering, Inc.	E03												
BMW Manufacturing Co.	E05												
Boston Scientific	N30												
Bo-Witt Products Inc.	S28												
Cameron	N18												
Caterpillar Inc	S07												
Cerner Corporation	N53												
Chrysler Group LLC	N01												
CNH America LLC	W01												
ConAgra Foods, Inc.	S34												
Contact Singapore	S48												
Danaher Corporation	S17												
Eaton Corporation	E01												
Halliburton	S20												
Harris Corporation	D08												
Harrison Steel Castings Company	N39												
Hill's Pet Nutrition	N46												
Honeywell	N06												
HUSCO International, Inc.	W03												
Ingersoll Rand/Trane	D02												
Intel Corporation	N31												
Jacobs	N19												
Johnson Controls	S35												
Keyence Corporation of America	S51												
Kiewit Corporation	D04												
Kohler Co.	S46												
l-3 Communications-Communication systems -West	S50												
Lockheed Martin	N43												
Lowe's Companies, Inc.	S47												
Lutron Electronics	W05												
Michelin North America	N49												
Molex, Inc	S43												
NAVAIR	N15												

# Industrial Engineering

Employer	Table	Freshman	Sophomore	Junior	Senior	Graduate	Co-op	Internship	Full time	US Citizen	Permanent resident	F1 Visa	J1 Visa
Niagara Bottling, LLC	S15												
Oerlikon Fairfield Manufacturing	S18												
Otis Elevator Company	N14												
PowerPlan	S45												
Praxair, Inc.	S44												
Remy International	N29												
Rockwell Automation	S22												
Ryder	N38												
SanDisk	N37												
Schlumberger	N32												
Siemens Corporation	N21												
Syngenta	N40												
Tesla Motors	D07												
The Kenrich Group	S25												
Tognum America Inc.	S27												
US Marine Corp. Officer Programs	N45												
US Navy Officer Programs	W06												
Valeo Sylvania	S33												
Zimmer, Inc.	S49												

# Mechanical Engineering

Employer	Table	Freshman	Sophomore	Junior	Senior	Graduate	Co-op	Internship	Full time	US Citizen	Permanent resident	F1 Visa	J1 Visa
Accenture	S31												
Air Liquide	S42												
Albemarle	E08												
Altair Engineering	D10												
Ameren	W02												
American Woodmark Corporation	S14												
Apple	W07												
Applied Materials	N09												
Applied Research Laboratories	N05												
ArcelorMittal	N04												
Arizona Public Service	S38												
Baker Hughes	N10												
Ball Aerospace and Technologies Corp.	N47												
Barry-Wehmiller Design Group	D03												
Bastian Solutions	N03												
Bechtel Corporation	S40												
Bechtel Plant Machinery, Inc.	N22												
Belcan Advanced Engineering and Technology	N25												
Belden	S10												
BIOTRONIK / Micro System Engineering, Inc.	E03												
Bloomberg	S16												
BMW Manufacturing Co.	E05												
Boston Scientific	N30												
Bo-Witt Products Inc.	S28												
BP Americas Inc.	S29												
B&R Industrial Automation	S19												
Bury+Partners, Inc.	N33												
Cameron	N18												
Caterpillar Inc	S07												
Chrysler Group LLC	N01												
C&I Engineering	N11												
CNH America LLC	W01												
ConAgra Foods, Inc.	S34												
Contact Singapore	S48												
Danaher Corporation	S17												
Dwyer Instruments, Inc.	S08												
Eaton Corporation	E01												
EISENMANN Corporation	N24												
Emerson Process Management	D05												
Esterline/Control Systems - BVR	N35												

# Mechanical Engineering

Employer	Table	Freshman	Sophomore	Junior	Senior	Graduate	Co-op	Internship	Full time	US Citizen	Permanent resident	F1 Visa	J1 Visa
Fenwal	D09												
Garmin International	S52												
General Dynamics Electric Boat	N26												
Gentex Corporation	D06												
Halliburton	S20												
Harris Corporation	D08												
Hill-Rom Holdings Inc.	D01												
Hill's Pet Nutrition	N46												
Honeywell	N06												
HUSCO International, Inc.	W03												
Ingersoll Rand/Trane	D02												
Intel Corporation	N31												
Jacobs	N19												
John Deere	E06												
Johnson Controls	S35												
Keyence Corporation of America	S51												
Kiewit Corporation	D04												
Kohler Co.	S46												
l-3 Communications-Communication systems -West	S50												
L-3 Communications, Mission Integration Division	E02												
Lexmark International	E09												
Lockheed Martin	N43												
Lutron Electronics	W05												
MacLean-Fogg Company	N48												
Marathon Petroleum Company LP	W08												
Mercedes Benz US International, Inc	S26												
Michelin North America	N49												
Micron Technology, Inc.	N50												
MIT Lincoln Laboratory	S09												
Molex, Inc	S43												
Muller-BBM VibroAkustik Systeme, Inc.	N13												
NAVAIR	N15												
Navistar, Inc.	S11												
Niagara Bottling, LLC	S15												
Oerlikon Fairfield Manufacturing	S18												
Orbital Sciences Corporation	N23												
Otis Elevator Company	N14												
Parkson Corporation	S04												
PowerPlan	S45												
Praxair, Inc.	S44												

# Mechanical Engineering

Employer	Table	Freshman	Sophomore	Junior	Senior	Graduate	Co-op	Internship	Full time	US Citizen	Permanent resident	F1 Visa	J1 Visa
Productive Resources	N52												
Remy International	N29												
Robert Bosch LLC	N27												
Rockwell Automation	S22												
Sargent & Lundy	N16												
Schlumberger	N32												
Siemens Corporation	N21												
Southwest Research Institute	S23												
SPX Corporation	N51												
Syngenta	N40												
Tesla Motors	D07												
ThyssenKrupp Presta	S02												
Tognum America Inc.	S27												
US Marine Corp. Officer Programs	N45												
US Navy Officer Programs	W06												
Valco Sylvania	S33												
Wilson Sporting Goods	S37												
Zimmer, Inc.	S49												

# Material Science Engineering

Employer	Table	Freshman	Sophomore	Junior	Senior	Graduate	Co-op	Internship	Full time	US Citizen	Permanent resident	F1 Visa	J1 Visa
Air Liquide	S42												
Apple	W07												
Applied Materials	N09												
ArcelorMittal	N04												
Arizona Public Service	S38												
Baker Hughes	N10												
Ball Aerospace and Technologies Corp.	N47												
Bechtel Plant Machinery, Inc.	N22												
BMW Manufacturing Co.	E05												
Boston Scientific	N30												
Cameron	N18												
Caterpillar Inc	S07												
Contact Singapore	S48												
Danaher Corporation	S17												
Gentex Corporation	D06												
Halliburton	S20												
Intel Corporation	N31												
Johnson Controls	S35												
Keyence Corporation of America	S51												
Kohler Co.	S46												
Marathon Petroleum Company LP	W08												
Mercedes Benz US International, Inc	S26												
Micron Technology, Inc.	N50												
MIT Lincoln Laboratory	S09												
Niagara Bottling, LLC	S15												
Oerlikon Fairfield Manufacturing	S18												
PowerPlan	S45												
Praxair, Inc.	S44												
Rockwell Automation	S22												
Schlumberger	N32												
Tognum America Inc.	S27												
US Marine Corp. Officer Programs	N45												
US Navy Officer Programs	W06												
Zimmer, Inc.	S49												

## Management

Employer	Table	Freshman	Sophomore	Junior	Senior	Graduate	Co-op	Internship	Full time	US Citizen	Permanent resident	F1 Visa	J1 Visa
Accenture	S31												
Air Liquide	S42												
American Woodmark Corporation	S14												
Apple	W07												
Belden	S10												
BIOTRONIK / Micro System Engineering, Inc.	E03												
BMW Manufacturing Co.	E05												
Cerner Corporation	N53												
Contact Singapore	S48												
Danaher Corporation	S17												
Keyence Corporation of America	S51												
Niagara Bottling, LLC	S15												
Oerlikon Fairfield Manufacturing	S18												
PowerPlan	S45												
Ritron	N28												
SanDisk	N37												
Tognum America Inc.	S27												
US Marine Corp. Officer Programs	N45												

## Nuclear Engineering

Employer	Table	Freshman	Sophomore	Junior	Senior	Graduate	Co-op	Internship	Full time	US Citizen	Permanent resident	F1 Visa	J1 Visa
Arizona Public Service	S38												
Bechtel Corporation	S40												
Bechtel Plant Machinery, Inc.	N22												
Contact Singapore	S48												
General Dynamics Electric Boat	N26												
Halliburton	S20												
Sargent & Lundy	N16												
Schlumberger	N32												
US Marine Corp. Officer Programs	N45												
US Navy Officer Programs	W06												

# Organizational Leadership & Supervision

Employer	Table	Freshman	Sophomore	Junior	Senior	Graduate	Co-op	Internship	Full time	US Citizen	Permanent resident	F1 Visa	J1 Visa
Accenture	S31												
Air Liquide	S42												
Altair Engineering	D10												
American Woodmark Corporation	S14												
Apple	W07												
Gentex Corporation	D06												
Keyence Corporation of America	S51												
Oerlikon Fairfield Manufacturing	S18												
US Marine Corp. Officer Programs	N45												

# Physics

Employer	Table	Freshman	Sophomore	Junior	Senior	Graduate	Co-op	Internship	Full time	US Citizen	Permanent resident	F1 Visa	J1 Visa
Applied Materials	N09												
Applied Research Laboratories	N05												
Baker Hughes	N10												
Ball Aerospace and Technologies Corp.	N47												
BIOTRONIK / Micro System Engineering, Inc.	E03												
Bloomberg	S16												
Contact Singapore	S48												
Intel Corporation	N31												
Keyence Corporation of America	S51												
Lockheed Martin	N43												
Lutron Electronics	W05												
Micron Technology, Inc.	N50												
MIT Lincoln Laboratory	S09												
National Security Agency	W10												
NAVAIR	N15												
PowerPlan	S45												
Schlumberger	N32												
US Marine Corp. Officer Programs	N45												
US Navy Officer Programs	W06												
Valeo Sylvania	S33												

# **Company Profiles**

## **ABF Freight System, Inc.**

### **Table: N08**

From its origin as a small local carrier in 1923, ABF Freight System, Inc. has been transformed into one of North America's largest and most experienced motor carriers with local service centers serving all 50 states, Canada, Mexico, Guam and Puerto Rico. Globally, the carrier serves 250 ports in more than 130 countries. ABF is best-in-class for safety, security, technology and freight-handling. InformationWeek, CIO, InfoWorld, and BtoB magazines have cited ABF's strategic use of information technology as exemplary.

## **Accenture**

### **Table: S31**

Accenture is a global management consulting, technology services and outsourcing company, with approximately 236,000 people serving clients in more than 120 countries. Combining unparalleled experience, comprehensive capabilities across all industries and business functions, and extensive research on the world's most successful companies, Accenture collaborates with clients to help them become high-performance businesses and governments. The company generated net revenues of US\$25.5 billion for the fiscal year ended Aug. 31, 2011. Its home page is [www.accenture.com](http://www.accenture.com).

## **Advanced Micro Devices**

### **Table: N07**

AMD (NYSE: AMD) is a semiconductor design innovator leading the next era of vivid digital experiences with its ground-breaking AMD Fusion Accelerated Processing Units (APUs). AMD's graphics and computing technologies power a variety of solutions including PCs, game consoles and the servers that drive the Internet and businesses.

## **Air Liquide**

### **Table: S42**

Air Liquide develops innovative technologies and sustainable solutions, optimizing the use of air and the planet's natural resources, enabling progress and preserving life. Located in over 80 countries, we have more than 1,000,000 customers globally in diverse industries such as steel, food and beverage, electronics and pharmaceuticals. For more information about Air Liquide and its programs geared toward college students and recent graduates, visit <http://www.us.airliquide.com/en/careers/student-zone.html> or email us at [college.recruiting@airliquide.com](mailto:college.recruiting@airliquide.com)!

## **Ameren**

### **Table: W02**

Ameren Corporation (NYSE: AEE) is among the nation's largest investor-owned electric and gas utilities, with about \$24 billion in assets. The largest electric utility in Missouri and the second largest in Illinois, Ameren companies provide energy services to 2.4 million electric and one million natural gas customers throughout its 64,000-square-mile territory.

## **Applied Materials**

### **Table: N09**

Applied Materials, Inc. is the global leader in providing innovative equipment, services and software to enable the manufacture of advanced semiconductor, flat panel display and solar photovoltaic products. Our technologies help make innovations like smartphones, flat screen TVs and solar panels more affordable and accessible to consumers and businesses around the world. At Applied Materials, we turn today's innovations into the industries of tomorrow.

## **Applied Research Laboratories**

### **Table: N05**

Applied Research Laboratories, The University of Texas at Austin, (ARL:UT) was established in 1946 and is currently the largest organized research unit of the University and is also a U. S. Navy University Affiliated Research Center (UARC). ARL:UT is a nationally recognized leader in addressing critical problems for U.S. government and industry sponsors, and our research staff is a diverse group of scientists and engineers performing basic and applied research primarily in support of national security.

## **ArcelorMittal**

### **Table: N04**

ArcelorMittal USA is the largest steel producer in North America and the largest integrated steel producer in the United States. ArcelorMittal is the leader in all major global markets, including automotive, construction, household appliances and packaging. It is the world's largest and most global steel company by both revenue and production, with over 285,000 employees in 60 countries.

## **Bechtel Plant Machinery, Inc.**

### **Table: N22**

Bechtel Plant Machinery, Inc. (BPMI) and Bechtel Marine Propulsion Corp. (BMPC) are prime contractors for the U.S. Navy's Nuclear Propulsion Program. BMPC designs the world's most technologically advanced reactor plants and systems in support of U.S. fleet nuclear powered ships. BPMI provides design, manufacturing, and procurement management for the fabrication, testing, delivery, installation, and field support of high quality nuclear power plant components. We are located in Pittsburgh, Pennsylvania and Niskayuna, New York.

## **Belden**

### **Table: S10**

Belden is a world leader in comprehensive copper and fiber cable, wireless technology, industrial networking, connectors and other transmission solutions. It has about 7,500 employees worldwide, and provides connectivity and value for industrial automation, enterprise, education, healthcare, entertainment and broadcast, sound and security, transportation, infrastructure, consumer electronics and other industries. We have manufacturing capabilities throughout North America, Europe and Asia and a market presence in nearly every region of the world.

## **BIOTRONIK / Micro System Engineering, Inc.**

### **Table: E03**

Micro Systems Engineering, Inc (MSEI) is a pioneer in developing innovative technologies and medical devices that save and enhance the quality of life for millions of individuals living with cardiovascular disorders. The company is dedicated to the design and construction of implantable medical devices for cardiac rhythm management. With more than 30 years of experience, our growing success is based on our company's core values: innovation, excellence and reliability, thus enabling us to inspire confidence and trust in doctors and patients all over the world. We are continually looking for talented engineers to share in our mission.

## **Bloomberg**

### **Table: S16**

Bloomberg's Research and Development department offers exciting opportunities for highly-motivated individuals seeking a challenging technical role in the financial industry. An extensive training program will provide technical and financial skills needed to succeed in Bloomberg's fast-paced and dynamic organization. Successful applicants will be involved in the design and development of state-of-the-art financial information software products. The position can lead to a variety of career paths, including technologist and financial specialist. We are looking for Software Developers with the following backgrounds: \*Internship Roles - Computer Science Major ONLY \*Full Time Roles - All Majors

## **Bo-Witt Products Inc.**

### **Table: S28**

The Company, founded in 1960 and located in Edinburgh, Indiana, is a leading processor of thermoset composites, insulators and custom products for the transportation (railroad), electrical, mass transit and mining markets. The ISO 9001:2008 certified company is privately held and serves major OEM's including GE, Eaton, Komatsu, STERIS and Walt Disney as well as hundreds of motor repair facilities and mass transit authorities throughout the United States.

## **BP Americas Inc.**

### **Table: S29**

BP is one of the world's leading international oil and gas companies, providing its customers with fuel for transportation, energy for heat and light, retail services and petrochemicals products for everyday items. We expect to be held to high standards in what we do. We strive to be a safety leader in our industry, a world-class operator, a good corporate citizen and a great employer.

## **Caterpillar Inc**

### **Table: S07**

For more than 85 years, Caterpillar Inc. has been making progress possible and driving positive and sustainable change on every continent. Caterpillar has grown to be the largest maker of construction and mining equipment, diesel and natural gas engines and industrial gas turbines in the world. In partnership with our worldwide dealer network, Caterpillar is driving positive and sustainable change on every continent. As a global, diverse technology leader, Caterpillar is a leading service provider through Caterpillar Financial Services, Caterpillar Remanufacturing Services, Caterpillar Logistics Services and Progress Rail Services.

## **CNH America LLC**

### **Table: W01**

CNH is the number one manufacturer of agricultural tractors and combines in the world, the third largest manufacturer of construction equipment and has one of the world's largest equipment finance companies. Its agricultural equipment and construction equipment operations manufacture, market and distribute a full line of farm and construction equipment on a worldwide basis; its financial services business segment provides broad-based financial services to its customers in the global marketplace.

## **Cognizant Technology Solutions**

### **Table: N34**

Cognizant Technology Solutions Corp. (NASDAQ: CTSI) is an American global provider of custom information technology, consulting and business process outsourcing services. Its headquarters are in Teaneck, New Jersey, United States and is a member of NASDAQ-100, the S&P 500 and Fortune 500. Cognizant has been named to Fortune magazine's 100 Fastest-Growing Companies list for nine consecutive years, including 2011 when it was ranked first in the "All-Stars" list of 16 companies that appear on the fastest-growing list year after year.

## **Delphi**

### **Table: W04**

Delphi is a leading global supplier of electronics and technologies for automotive, commercial vehicle and other market segments. Operating major technical centers, manufacturing sites and customer support facilities in 30 countries, Delphi delivers real-world innovations that make products smarter and safer as well as more powerful and efficient.

## **EchoStar**

### **Table: S12**

EchoStar Corporation (NASDAQ: SATS) is a premier global provider of satellite operations and digital TV solutions that enhance today's home entertainment lifestyle. Its wholly owned subsidiary, Hughes, is the world's leading provider of satellite broadband for home and office, delivering innovative network technologies and managed network services for enterprises and governments in more than 100 countries. Among the many offerings of this combined powerhouse in broadband data and video are HughesNet, the market's #1 high-speed satellite Internet service; Sling Media's award-winning SlingLoaded technology; and Move Networks' adaptive bit-rate streaming technology.

## **Emerson Process Management**

### **Table: D05**

Emerson Process Management, Power & Water Solutions, Inc., is a leading supplier of process automation technology for the power and water/wastewater industry. Our groundbreaking suites of control technology, including PlantWeb digital architecture, Ovation expert control system and SmartProcess plant optimization software set the standard for reliable and responsive real-time monitoring and control.

## **Enova Financial**

### **Table: N20**

Enova is a web-based consumer lending company located in downtown Chicago. What began as a dynamic management team, with roots in Silicon Valley and Wall Street, has grown at a tremendous pace since its inception. Today, we are proud to have over 800 Enova team members serving millions of customers in the United States, United Kingdom, Australia, and Canada. Why work for Enova? Here at Enova, we're anything but conventional. We have fun meeting our customers' individualized needs not only through our extensive marketing relationships, but also our state-of-the-art technology.

## **Garmin International**

### **Table: S52**

It's a dynamic philosophy that has taken Garmin from a start-up GPS (Global Positioning System) manufacturer to a large international corporation that's earned the respect of customers, dealers and investors. Since its inception in 1989 by Gary Burrell and Dr. Min Kao, Garmin has evolved as the leading, worldwide provider of navigation, communication and information devices and applications, most of which are enabled by GPS technology. Garmin designs, develops, manufactures and markets a diverse line of user-friendly handheld portable and fixed-mount products for the auto, mobile, outdoor, fitness, marine and general aviation markets.

## **Greeley and Hansen**

### **Table: N36**

Greeley and Hansen is a leader in developing innovative engineering solutions for a wide array of water, wastewater, water reuse, and solid waste challenges aimed at improving public health, safety, and welfare. With a staff of more than 300 in 16 offices across the US, Greeley and Hansen provides services for all phases of projects ranging from master planning and feasibility studies through design, construction, and start-up. The firm also provides architectural and management consulting services. Projects that Greeley and Hansen has completed for clients continue to receive various industry awards for design and engineering excellence. Engineering News Record ranks Greeley and Hansen among both the "Top 25 Designers in Wastewater Treatment" and in "Sewerage and Solid Waste". Since the firm's founding in 1914, Greeley and Hansen has collaborated with its client partners in public and private utilities and agencies to create better urban environments.

## **Harrison Steel Castings Company**

### **Table: N39**

The Harrison The Harrison Steel Castings Company is a global leader in the production of highly engineered carbon and low/medium alloy steel castings. More than 100 years ago, J.W. Harrison established the National Car Coupler Company in Attica, Indiana. Today that company is Harrison Steel Castings Company, a world leader in the production of highly engineered carbon and low/medium alloy steel castings and a preferred supplier to many of the world's most prestigious names in agriculture, heavy equipment, energy, military, mining, and the oil and gas industries. Sophisticated engineering software, tightly controlled manufacturing processes, sophisticated quality programs, a motivated, non-union workforce, an emphasis on safety, and a continuous improvement culture ensure our customers of the best results possible.

## **Hill-Rom Holdings Inc.**

### **Table: D01**

Hill-Rom is one of the leading medical suppliers of beds and stretchers and is committed to delivering the best services, products, and solutions to our partners. We take pride in being a hospital bed manufacturer that designs the best answers for our customers' problems. As a hospital equipment supplier, we make new hospital beds customized for patients' needs. We also work with our partners to help them find solutions for their patients.

## **Hill's Pet Nutrition**

### **Table: N46**

Summer Interns for 2012 Majors : BSChE, BSME, BSIE

## **I-3 Communications-Communication systems -West**

### **Table: S50**

L-3 Communication Systems Group is a leader in communications systems for high-performance intelligence collection, imagery processing and satellite communications for the Department of Defense (DoD) and other government agencies. The company provides high-data rate, wideband, secure, real-time communications systems for surveillance, reconnaissance and other intelligence collection systems.

## **Lutron Electronics**

### **Table: W05**

Lutron Electronics Co., Inc. is the world's leading designer and manufacturer of lighting controls, architectural lighting control systems and automated window treatments for residential and commercial applications. Founded in 1961, our focus has consistently been on product innovations, technology, quality and customer service. Lutron products can be found in the world's most exclusive homes and prestigious commercial properties, but you can also find a large selection of our products in many do-it-yourself home stores, electrical distributors and lighting showrooms.

## **Michelin North America**

### **Table: N49**

From its beginnings in 1889 as a small rubber factory in Clermont, France, Michelin has grown into the largest tire company in the world, with 70 plants on four continents, more than 130,000 employees and the reputation for producing top quality tires. Michelin, as an international group of corporations, is dedicated to the most advanced disciplines of science and research, manufacturing and marketing... entirely focused on one product... tires.

## **Micron Technology, Inc.**

### **Table: N50**

Micron is one of the world's leading semiconductor companies. Our DRAM, NAND and NOR Flash memory products are used in everything from computing, networking, and server applications, to mobile, embedded, consumer, automotive, and industrial designs. We're an innovator and industry leader, developing groundbreaking technologies that transform what's possible. We're also a partner with other manufacturers and enablers, making it easier for our customers to try new things and gain competitive advantages in their markets.

## **MIT Lincoln Laboratory**

### **Table: S09**

Lincoln Laboratory's mission is to apply science and advanced technology to critical problems of national security. A Department of Defense federally funded research and development center, the Laboratory's emphasis is building prototypes and demonstrating operation systems under live test conditions that meet real-world requirements. Candidates will have the opportunity to engage in research and development activities in the eight primary mission areas: space control, air & missile defense technology, communication systems & cyber security, intelligence, surveillance, and reconnaissance systems and technology, advanced electronics technology, tactical systems, homeland protection and air traffic control. For more information, visit [www.ll.mit.edu](http://www.ll.mit.edu).

## **Molex, Inc**

### **Table: S43**

Founded in 1938, Molex is one of the largest connector manufacturers in a \$36B global marketplace, with 39 manufacturing locations in 16 countries and over \$3.5B in sales. We have a strong financial position and employ over 35,000 professionals worldwide. Our team of highly skilled experts is focused on the design, development and distribution of innovative product solutions that touch virtually every walk of life; from your cell phone to your dishwasher, your car to your favorite video game; our portfolio is among the world's most extensive with over 100,000 reliable products. We participate in the Purdue Career event because of the opportunity to connect with individuals like you who are serious about their education and thoughtful about their future job prospects.

## **Muller-BBM VibroAkustik Systeme, Inc.**

### **Table: N13**

Muller-BBM VibroAkustik Systeme, Inc. is a worldwide leader in dynamic data acquisition and analysis systems for sound and vibration testing. We sell hardware and software testing equipment and are looking for an Application Engineer.

## **Niagara Bottling, LLC**

### **Table: S15**

Niagara Bottling, LLC is the nation's largest bottler of private branded water in the country. We are a privately owned and operated company that has been growing at an average rate of 30% per year for the last 8 years. We are seeking top engineering students interested in our Plant Engineering Internship Program at our plant in Plainfield.

## **Oerlikon Fairfield Manufacturing**

### **Table: S18**

Oerlikon Fairfield Manufacturing Co., Inc. is the largest independent gear manufacturer in the United States. Oerlikon Fairfield's Lafayette, Indiana facility is a 600,000 square feet with over 750 machine tools and employs approximately 1200 employees. Over the past 90 years, Fairfield has increased our manufacturing capabilities significantly Fairfield's customers include those in the rail and locomotive, mining machinery, forestry, road and highway construction equipment, wind energy, agricultural, power generation, marine, and hoisting and lifting equipment.

## **Parkson Corporation**

### **Table: S04**

Parkson Corporation is a leading provider of advanced solutions in water and wastewater recycling and treatment, committed to providing clean water for the world.

## **Praxair, Inc.**

### **Table: S44**

Praxair is a Fortune 300 corporation with 27,000 employees in more than 30 countries. We are the largest industrial and medical gases company in North and South America and one of the largest worldwide. We service more than one million customers in a wide variety diversity of markets, from metals, energy and chemicals to aerospace, electronics, healthcare and food. Founded in 1907, Praxair markets atmospheric gases, process gases, specialty gases and high-performance coatings. Our products, advanced gas-delivery systems and applications technologies help our customers improve the profitability and efficiency of their businesses.

## **Productive Resources**

### **Table: N52**

Engineering Services Our Mechanical Engineering Services focus on the layout, design, engineering, CAD drafting, and FEA analysis of mechanical systems and parts. Expertise is evident in our work for agricultural manufacturers, automotive sub-systems, aerospace, aircraft engine, diesel engine, heavy machinery, off-highway equipment, power generation, transportation, and military equipment. Our teams are ready to assist you with any mechanical design challenges. Technical Documentation Productive Resources' Logistics Provisioning group offers a wide range of Provisioning Technical Documentation support services and products. Our provisioning group provides the data used for determining and acquiring the support items necessary to operate and maintain an end item. The goal of this process is to have the support items available in time to meet our customer's operational needs.

## **Ritron**

### **Table: N28**

Ritron, Inc. is a US designer, manufacturer and marketer of industrial-grade wireless voice and data communication equipment. Founded in 1977, the company is privately-held and is located in Carmel, Indiana.

## **SanDisk**

### **Table: N37**

SanDisk Corporation (NASDAQ: SNDK) is a global leader in flash memory storage solutions, from research and development, product design and manufacturing to branding and distribution for OEM and retail channels. Since 1988, SanDisk's innovations in flash memory and storage system technologies have provided customers with new and transformational digital experiences. SanDisk's diverse product portfolio includes flash memory cards and embedded solutions used in smart phones, tablets, digital cameras, camcorders, digital media players and other consumer electronic devices, as well as USB flash drives and solid-state drives (SSD) for the computing market. SanDisk is a Silicon Valley-based S&P 500 and Fortune 500 company, with more than half its sales outside the United States. For more information, visit [www.sandisk.com](http://www.sandisk.com).

## **Sargent & Lundy**

### **Table: N16**

Sargent & Lundy is a worldwide leader in professional engineering services for the electric power industry and has been dedicated exclusively to serving electric power clients since 1891. The firm provides comprehensive engineering, energy business consulting, and project services for both new and operating nuclear and fossil-fueled power plants and power delivery systems. We have designed more than 870 power plants for developers and utility clients in the public and private sectors worldwide. We have also designed more than 5,000 circuit miles of high voltage and extra-high voltage transmission lines and more than 100 substations. Our diverse projects provide new engineers with opportunities to work on a wide variety of interesting and challenging projects. Our offices are located in downtown Chicago and suburban Warrenville.

## **Seatrax, Inc.**

### **Table: N41**

Seatrax, Inc. designs, engineers, manufactures and services cranes for the offshore marine industry. Our main facility is located in Houston, Texas with additional facilities in Louisiana and the United Kingdom.

## **Siemens Corporation**

### **Table: N21**

Siemens Corporation is a U.S. subsidiary of Siemens AG (NYSE: SI), a global powerhouse in electronics and electrical engineering, operating in the industry, energy and healthcare sectors. For more than 160 years, Siemens has built a reputation for leading-edge innovation and the quality of its products, services and solutions. With 405,000 employees in 190 countries, Siemens reported worldwide revenue of \$102.9 billion in fiscal 2011. Siemens in the USA reported revenue of \$19.9 billion and employs approximately 62,000 people throughout all 50 states and Puerto Rico. For more information on Siemens in the United States, visit [www.usa.siemens.com](http://www.usa.siemens.com)

## **SPX Corporation**

### **Table: N51**

Based in Charlotte, North Carolina, SPX Corporation (NYSE: SPW) is a global Fortune 500 multi-industry manufacturing leader with over \$5 billion in annual revenue, operations in more than 35 countries and approximately 16,000 employees. The company's highly-specialized, engineered products and technologies serve customers in three primary strategic growth markets: infrastructure, process equipment and diagnostic tools. Many of SPX's innovative solutions are playing a role in helping to meet rising global demand for electricity, processed foods and beverages and vehicle services, particularly in emerging markets. The company's products include cooling systems for power plants; power transformers for utility companies; diagnostic tools and charging equipment for the automotive industry; and food processing systems for the food and beverage industry. We will be recruiting for our Engineering Development Program (EDP) at this event.

## **Syngenta**

### **Table: N40**

Syngenta is a world-leading agribusiness committed to sustainable agriculture through innovative research and technology. The company is a leader in crop protection, and ranks third in the high-value commercial seeds market. Sales in 2010 were approximately \$11.6 billion. Syngenta currently employs over 26,000 people in more than 90 countries. Syngenta is listed on the Swiss stock exchange (SYNN) and in New York (SYT). Further information is available at [www.syngenta.com](http://www.syngenta.com). Please visit our career site at [jobs.syngenta.com](http://jobs.syngenta.com) to see all of our opportunities.

## **The Kenrich Group**

### **Table: S25**

The Kenrich Group LLC is a rapidly growing business and litigation consulting firm with approximately 65 employees in offices in Chicago, Dallas, Minneapolis, New York, Phoenix and Washington, D.C. Our professionals provide assistance in accounting, financial, engineering and economic analyses in a variety of industries such as construction, utilities, government contracts, intellectual property and others. The Kenrich Group focuses on assisting corporations and their counsel in addressing the issues associated with complex disputes and investigations throughout the entire litigation process. As testifying experts, we prepare and deliver testimony in depositions, arbitrations and trials.

## **ThyssenKrupp Presta**

### **Table: S02**

ThyssenKrupp Presta is a part of the ThyssenKrupp Chassis organization which includes around 6500 employees. ThyssenKrupp Presta is a technology leader of steering systems, cold forging parts and shock absorbers in the automotive industry. In North America, we manufacture steering systems and cold forging components in Terre Haute, Indiana and Puebla, Mexico. Sales and resident engineering offices serve our customers in Troy, Michigan and Duncan, South Carolina. ThyssenKrupp Presta Terre Haute, established in 2003, is a leading manufacturer of steering systems for the automotive industry in North America. With approximately 250 employees including sales, product development, purchasing, and production, our focus is on safety, quality, delivery and cost. All these areas are part of our company culture supported by innovative products and a high level of automation.

## **US Navy Officer Programs**

### **Table: W06**

They operate and maintain the most formidable Fleet of nuclear-powered submarines and aircraft carriers on the planet. They pursue the highest degree of intellectual and personal challenges in the nuclear field. They apply nuclear energy and fundamentals of engineering in ways that not only help to defend our national security but also serve to better our world. These are the men and women of the Navy Nuclear Propulsion community within America's Navy. Submarine Officers (Nuclear). Surface Warfare Officers (Nuclear). Naval Reactors Engineers. Naval Nuclear Power School Instructors. And Nuclear Operations personnel. These personnel assume the kind of responsibilities and leadership roles that even their most talented peers wait years to take on. This is your chance to go behind the scenes into the classified world of Navy Nuclear Propulsion. And to learn about the amazing jobs and career opportunities available with or without a college degree.

## **Wilson Sporting Goods**

### **Table: S37**

Wilson Sporting Goods Co. is looking for a co-op for the Racquet Sports Division at our Innovation Center in Schiller Park, IL. The student will work side by side with engineers on product development, laboratory testing, blue sky innovation, and new material research at our 37,000 sq ft Innovation Center. Projects will range from the daily duties of tennis ball and string testing to larger scale studies that have included advanced composite lay-up analysis, development of dynamic test equipment, and pro player equipment support. Of course, there is plenty of opportunity for equipment play-testing as well.

## **Zimmer, Inc.**

### **Table: S49**

Founded in 1927 and headquartered in Warsaw, Indiana, Zimmer is a worldwide leader in designing, developing, manufacturing and marketing orthopedic reconstructive, spinal and trauma devices, dental implants, and related surgical products. Zimmer has operations in more than 27 countries around the world and sells products in more than 100 countries. Zimmer's 2010 sales were approximately \$4.2 billion. The Company is supported by the efforts of more than 8,000 employees worldwide.

# **Scholarship Sponsors**

PESC would like to give a special thanks to the following scholarship sponsors:

American Woodmark Corporation

ArcelorMittal

Belden

Bloomberg

BP Americas Inc.

Cognizant Technology Solutions

JDSU

Michelin North America

Navistar, Inc.

Niagara Bottling, LLC

Schlumberger

Syngenta

**Notes:**

# Purdue Engineering Student Council Events

The Purdue Engineering Student Council (PESC) has been active on the Purdue West Lafayette campus since it was founded in 1975. PESC is composed of 40 students representing all the engineering schools and the First-Year Engineering Program. PESC works to provide activities for Purdue students and helps to promote student interaction with faculty and industry.



PESC will sponsor the following events for Purdue students in the spring 2012 semester:

**EXPO Prep Night: February 2**  
**Engineers' Week: February 20-24**  
**Sports Tourney: March 3**  
**Envision, Springfest: April 14**  
**Golf Tourney: April 15**  
**Student Faculty Picnic: April 25**

## EXPO Committee

### **EXPO Director:**

Adithi Amarnath, Connor Burnett

### **Registration Coordinators:**

Jennifer Evans, Roshan Jobanputra

### **Publications Coordinator:**

Sree Panuganty

### **Facilities Coordinator:**

Deyu Kong

### **Hospitality Coordinator:**

Kristen Leenerman

### **Scholarship Coordinator:**

Anna Filley



# Purdue Engineering Student Council



[www.purdueesc.org](http://www.purdueesc.org)

Please visit our website for more  
information and an electronic  
version of this guidebook